

WATER COOLED HARD CANDY DROP ROLLER MACHINE,

FOR THE PRODUCTION OF SUGAR & SUGAR-FREE HARD CANDY DROPS, SOME FIRMER SOFT TYPE CANDIES, INCLUSIONS SUCH AS HONEYCOMB, FUDGE ETC

Designed and manufactured in the UK by Loynds, The Drop Roller Forming Machine has one set of water-cooled pre sizing rollers and one set of water-cooled forming rollers.

Each roller measures 363mm width x 154mm O/D but these can be customized. Each set of rollers is independently controlled with variable speed. The output is dependent on product and its size but typically this is around 500Kg per hour. The machine is full stainless steel and the forming roller is made from phosphor bronze.

Chilled water is delivered to the rollers by a water chilling unit which is supplied separately.

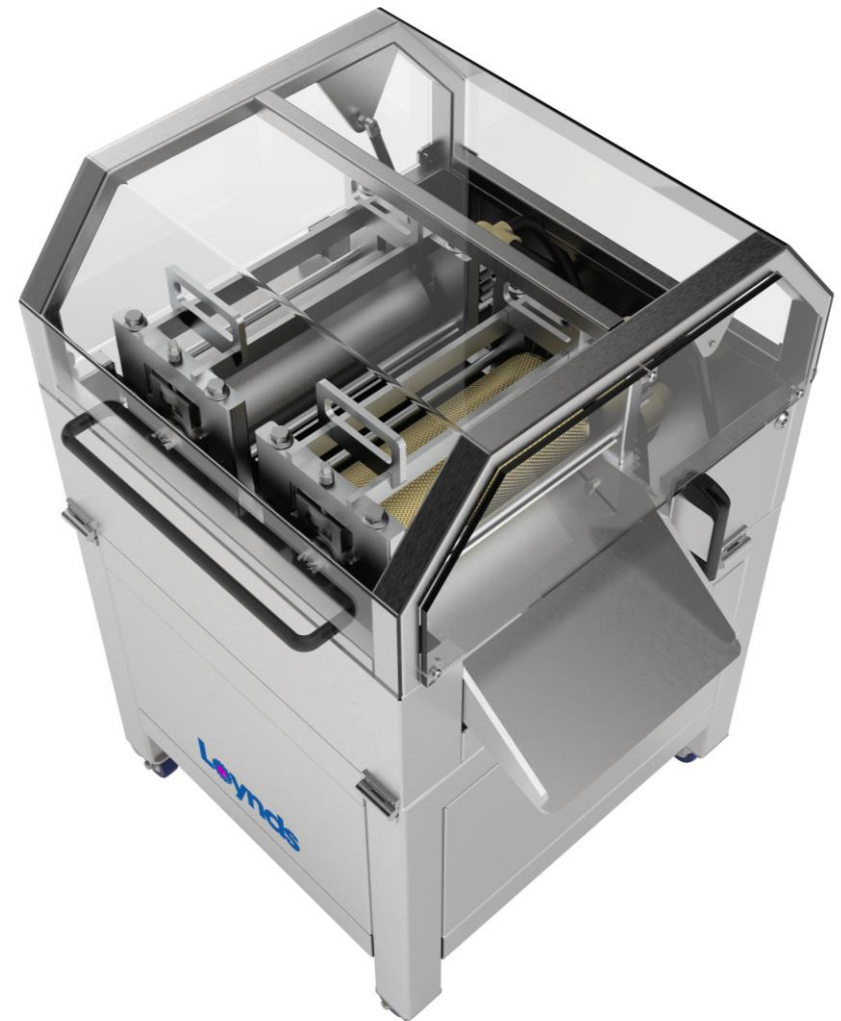
The forming roller assemblies are designed so that the whole assembly can be lifted in and out of the machine meaning die changeovers can be done in less than 10 minutes.

The machine is fully guarded with a hinged acrylic lid which is mounted on gas struts and magnetic guard switches are fitted so if the lid is opened the machine stops safely.

The machine is controlled via a touch screen (HMI) which gives access to speeds, on/off and safety functions. The water-cooled drop roller can also be supplied with a cooling tunnel or conveyor system to move product away from the machine. Additionally, we can supply breaking drums to break up the candy web and de-bur the products.

FEATURES

- Quick change over of die forming rollers saving production time
- Castors for ease of movement which are also lockable
- Rollers can be produced to customers specification
- Water cooled pre sizing and forming dies
- All parts easily removed for cleaning and maintenance



HARD CANDY PROCESSING



WATER COOLED HARD CANDY DROP ROLLER MACHINE,

SPECIFICATIONS

Overall Height
1298mm

Overall Length
959mm

Overall Width
1008mm

Material
Stainless Steel

Power
4kW

Uses
For high output forming of sugar & sugar-free hard candy drops, some firmer soft type candies, inclusions such as Honeycomb and fudge etc

